

Supported By



Higher Education Department,
Govt. of Uttar Pradesh



**BHARAT
SHIKSHA EXPO** **2026**
— 3rd EDITION —
CONFERENCE • EXHIBITION • NETWORKING
Inspiring Learning, Shaping Tomorrow
23, 24, 25 April 2026

Organised By



FACT SHEET

India: A Growing Economic Powerhouse

India is poised to become a significant economic powerhouse, driven by its massive education sector worth \$225 billion by FY 2024-25. The National Education Policy 2020 aims to transform the landscape by promoting internationalisation, technology integration, and inclusive skill development. With a focus on lifelong learning, India is expected to become a globally prominent education hub, attracting foreign universities and institutions.

A Must-attend Event For Global Education Exhibition For Everyone

The Bharat Shiksha Expo 2026 is a must-attend event for anyone in the education sector. It brings together leading figures, including government officials, university reps, and industry experts, to drive transformative change. With a diverse range of programs, including foundation to postgraduate courses, this expo offers a unique opportunity to explore the latest trends and opportunities in education.

ABOUT EXHIBITION

Bharat Shiksha Expo 2026 – B2C, B2B, G2G, C2C,
Physical Event – Focused on Education sector

EXHIBITION DATE

23 24 25 APRIL 2026

EXHIBITION TIMING

23-25 April 2026 | 10:00 AM TO 5:00 PM

VENUE

India Expo Centre & Mart
Knowledge Park – II, Greater Noida, Delhi NCR

200+ Exhibitor

500+ Product service

14000 SQM Exhibitor Area

25+ Categories

20+ Students Activities

SPECIAL FOCUS & ACTIVITIES

Exhibition & Networking | Knowledge Hub
Recognition & Inspiration | Interactive Learning

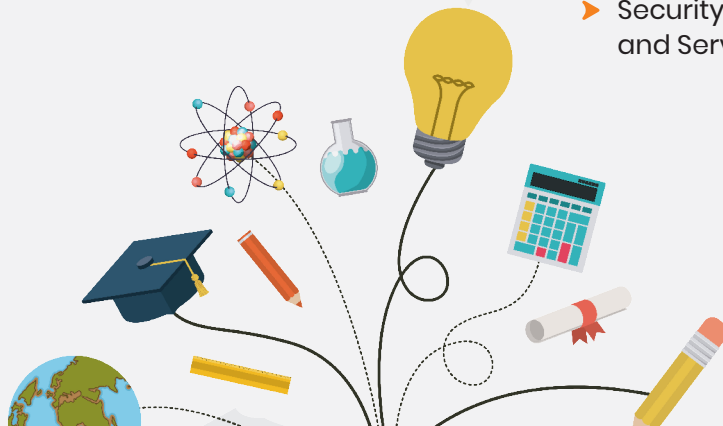
www.bharatshikshaexpo.com

Visitors Bifurcation 2024-2025

Visitor Category	2024	2025
Students	97902	120248
Academic Professional	1416	1739
Other Professionals & Visitors	2072	2593
GRAND TOTAL	101390	124580

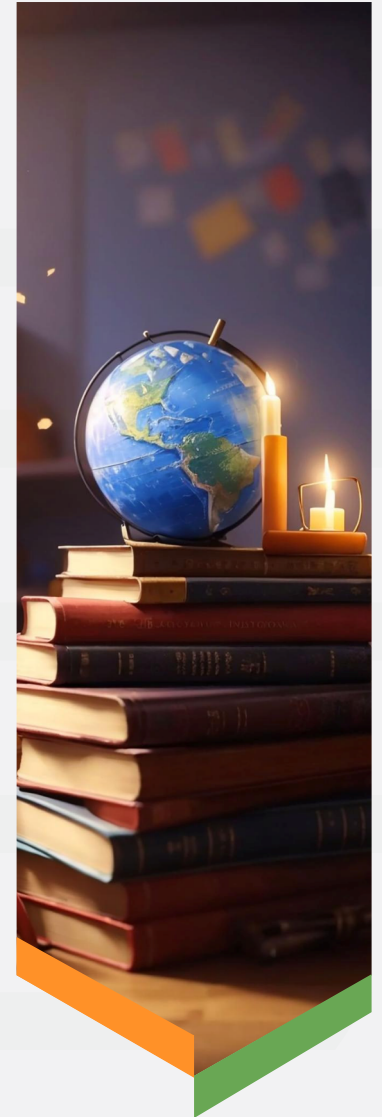
EXHIBITORS CATEGORY

- ▶ Universities (National/ International)
- ▶ Colleges (National/ International)
- ▶ Schools- Residential & Non-Residential
- ▶ International Schools – Residential & Non-Residential
- ▶ Specialized Training Colleges
- ▶ Early Childhood Education
- ▶ School & College Franchisees
- ▶ Competitive Examination Coaching Centres
- ▶ E-learning
- ▶ Embassies, High Commissions & Consulates
- ▶ Skill Development
- ▶ Vocational Training / Courses,
- ▶ Language Courses,
- ▶ Job-oriented Course Providers
- ▶ Sports Education and Academy
- ▶ Education Consultants & Representatives
- ▶ Banks, Other Financial Institutions, & Financial Aid Service Providers
- ▶ Education Portals & Online Education Counsellors
- ▶ Study Abroad and VISA Service Facilitators
- ▶ Scholarships
- ▶ International Education Magazines, Journals & Publications
- ▶ Ed-Tech
- ▶ Startups
- ▶ STEM
- ▶ Edu – Products/ Technology/ Accessories / Education Service Providers
- ▶ Hardware and Software
- ▶ Display solutions
- ▶ Resources / Equipment
- ▶ Technology
- ▶ Content / Curriculum
- ▶ Infrastructure & Building material
- ▶ Furniture/ Smart Furniture
- ▶ Music, Play and Sports resources
- ▶ Special Needs
- ▶ Teacher Training
- ▶ Allied & Supportive Products / Solutions
- ▶ Scientific & Lab Equipment
- ▶ Gym Equipment
- ▶ Library
- ▶ Swimming Pools
- ▶ Automation
- ▶ Security and Surveillance Products and Services



VISITORS

- ▶ Students and Parents
- ▶ Educators
- ▶ Graduates
- ▶ Researchers
- ▶ Policymakers
- ▶ Government Officials in the Education Sector
- ▶ Chancellors, Vice-Chancellors, Directors, Principals, Deans & Chairpersons
- ▶ Education Board Members & Associations
- ▶ Academicians, Administrative Heads & Decision-Makers from Educational Institutes, Universities, Colleges & Schools
- ▶ Consultants/Agents for Overseas Education & Emigration Services
- ▶ Visa Consultants
- ▶ Working Professionals Looking for Further Education
- ▶ Technical Professionals Seeking Training Abroad
- ▶ Retailers, Wholesalers, Distributors, Resellers, Buying Agents
- ▶ Investors Interested in School & College Opportunities
- ▶ Franchisees Across India
- ▶ International Education Seekers
- ▶ Media Personnel from National & International Outlets
- ▶ Media Houses
- ▶ Corporate Representatives Seeking Training Solutions for Employees
- ▶ Non-Governmental Organizations (NGOs) Focused on Education
- ▶ Educational Technology Enthusiasts and Developers
- ▶ Community Leaders and Activists in Education Reform
- ▶ Parents' Associations and Advocacy Groups
- ▶ Alumni Networks and Associations
- ▶ Educational Content Creators and Influencers
- ▶ Career Counsellors and Coaches
- ▶ Special Needs Educators and Advocates



CONNECT WITH LEADING WHO IS WHO OF THE EDUCATION SEGMENT :



The Bharat Shiksha Expo 2026 offers a unique opportunity to connect with the who's who of the education segment, bringing together a diverse range of stakeholders from across the sector.

With over **1,00,000 Visitors**, the expo will facilitate interactions between educators, counsellors, trainers, facilitators, manufacturers, suppliers, and key players from the **B2B, B2G, B2C, G2G, and C2C segments**. This convergence of experts and innovators will foster meaningful discussions, collaborations, and partnerships that can drive transformative change in the education landscape. By engaging with prominent figures from the education sector, attendees can gain valuable insights, explore new opportunities, and contribute to shaping the future of education in India.

EXHIBITION CHARGES

For Domestic

BUILT UP

INR 10000/- Per Square Meter +18% GST

Minimum size : 9 sq. meters

- Wall panels
- Floor Carpeting
- Fascia with participants name
- One dustbin
- One plug socket
- One table & two chairs
- 1 spotlight on every 3 sqm space

BARE

INR 9000/- Per Square Meter +18% GST

Minimum size : 27 sq. meters

For International

BUILT UP

USD 300/- Per Square Meter +18% GST

Minimum size : 9 sq. meters

- Wall panels
- Floor Carpeting
- Fascia with participants name
- One dustbin
- One plug socket
- One table & two chairs
- 1 spotlight on every 3 sqm space

BARE

USD 250/- Per Square Meter +18% GST

Minimum size : 27 sq. meters

Bank Details

Account Number	: 02782320000410
Name of the Account Holder	: INDIA EXPOSITION MART LTD.
Name of Bank	: HDFC Bank
Bank Branch and Address	: C-1, Alpha Plaza, Alpha Commercial Belt, Greater Noida – 201306, U. P.
Bank Key/MICR Code	: 110240036
RTGS/IFSC code	: HDFC0000278
Swift Code	: HDFCINBB
GST	: 09AAACI8678M1ZR
PAN	: AAACI8678M



**25 minutes from
New Delhi**



**60 minutes from IGI Airport
20 minutes from Jewar
Airport**



**40 minutes from Hazrat
Nizamuddin Railway Station**



**A city very well connected
with Delhi NCR through
Metro**

About IEML

- Amongst the top 4 India's largest integrated exhibitions and conventions venues in Greater Noida.
- Spread across 58 acres of land, with a build-up complex of 2,34,453.29 square meters area.
- Over 17 years of operating experience in the management and organization of exhibitions and trade fairs.
- 14 multipurpose halls, Five Star Rated Hotel Setup at Expo Inn with 134 Guest Rooms, Lounges, vast open area intensive parking and modern safety & security facilities.

FOR MORE INFORMATION CONNECT TO

Mohammad Wasim Fazal
Senior Manager
Mob.: +91-93110 98450
Email.: exhibition12@indiaexpocentre.com

Vishal Rai
Assistant Manager - Exhibition
Mob.: +91 99584 23729
Email.: exhibition14@indiaexpocentre.com

INDIA EXPOSITION MART LTD.

Plot No. 23-25 & 27-29, Knowledge IT Park II, Gautam Buddha Nagar, Greater Noida - 201310

info@bharatshikshaexpo.com | www.bharatshikshaexpo.com